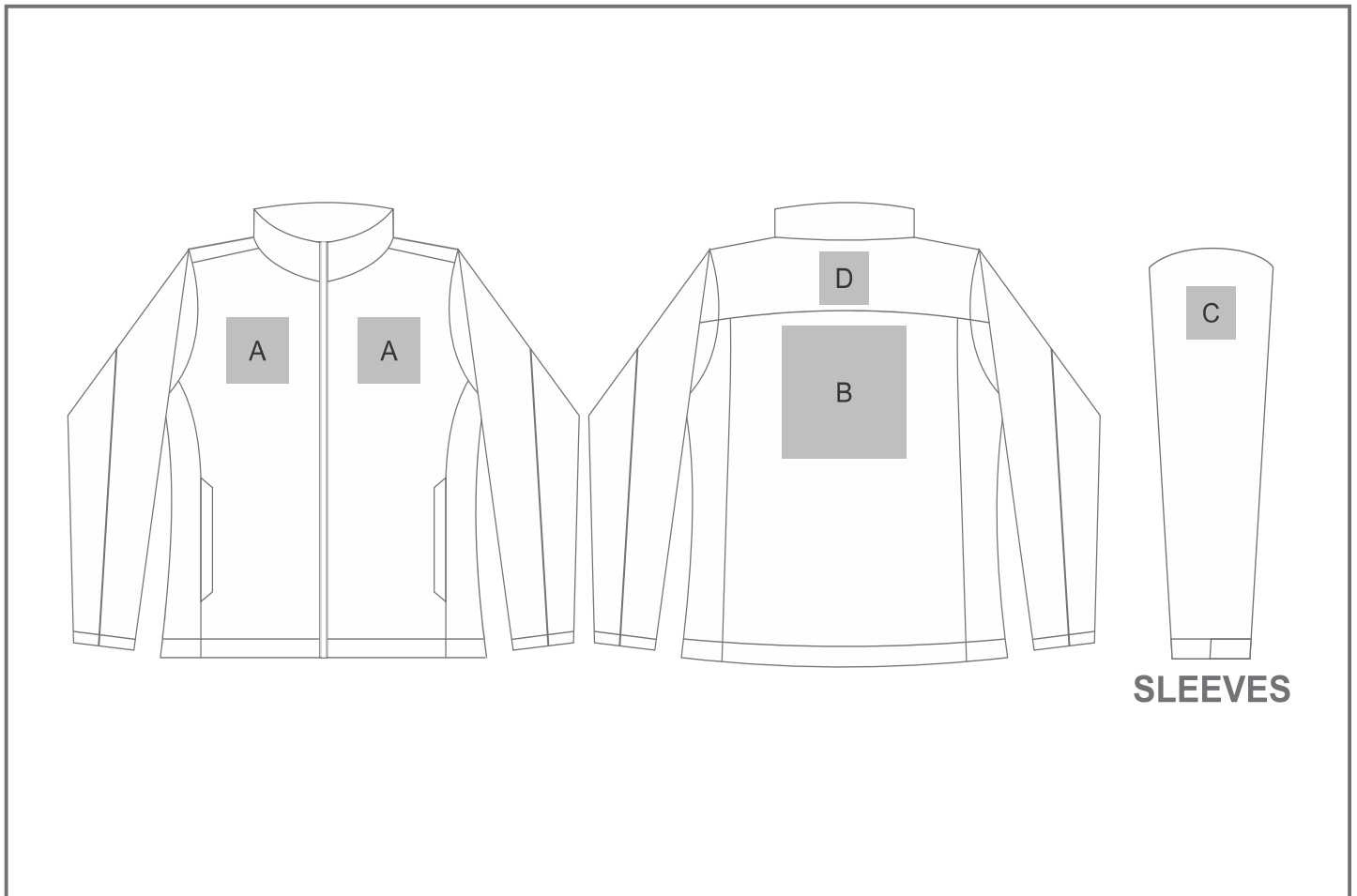


ELE-7305

Ladies Maxson Softshell Jacket



Need to know:

- Includes 1-Position Embroidery OR 1-Position Digital Transfer OR 1-Position Debossing
- EMB/DTC inclusive parameters: Left/Right Chest = 100mm x 100mm OR Back = 8000mm
- Cannot guarantee a 100% straight branding on any clothing item with check or stripe detail.

Branding Options:

Position	Branding Method (Branding Code)	No. of Colours	Dimension
A	Embroidery (EM-CLOTHING)	N/A	100mm wide x 100mm high
A	Debossing (BOS-1)	N/A	100mm wide x 60mm high
A	Digital Transfer Clothing A6 (DTC-A6)	Full Colour	100mm wide x 100mm high
A	Silicone (STP-A)	N/A	30mm wide x 30mm high
A	Silicone (STP-B)	N/A	50mm wide x 50mm high
A	Silicone (STP-C)	N/A	80mm wide x 80mm high

A	Silicone (STP-D)	N/A	100mm wide x 40mm high
---	------------------	-----	------------------------

B	Embroidery (EM-CLOTHING)	N/A	200mm wide x 200mm high
B	Debossing (BOS-1)	N/A	150mm wide x 100mm high
B	Digital Transfer Clothing A6 (DTC-A6)	Full Colour	105mm wide x 148mm high
B	Digital Transfer Clothing A5 (DTC-A5)	Full Colour	210mm wide x 148mm high
B	Silicone (STP-A)	N/A	30mm wide x 30mm high
B	Silicone (STP-B)	N/A	50mm wide x 50mm high
B	Silicone (STP-C)	N/A	80mm wide x 80mm high
B	Silicone (STP-D)	N/A	120mm wide x 40mm high

C	Embroidery (EM-CLOTHING)	N/A	80mm wide x 80mm high
C	Debossing (BOS-1)	N/A	90mm wide x 60mm high
C	Digital Transfer Clothing A6 (DTC-A6)	Full Colour	80mm wide x 80mm high
C	Silicone (STP-A)	N/A	30mm wide x 30mm high
C	Silicone (STP-B)	N/A	50mm wide x 50mm high
C	Silicone (STP-C)	N/A	80mm wide x 80mm high

D	Embroidery (EM-CLOTHING)	N/A	80mm wide x 80mm high
D	Debossing (BOS-1)	N/A	90mm wide x 60mm high
D	Digital Transfer Clothing A6 (DTC-A6)	Full Colour	80mm wide x 80mm high
D	Silicone (STP-A)	N/A	30mm wide x 30mm high
D	Silicone (STP-B)	N/A	50mm wide x 50mm high
D	Silicone (STP-C)	N/A	80mm wide x 80mm high